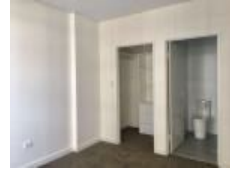


406/1 Guess Ave, Wollli Creek, NSW 2205

Leased - \$580 per Week

Apartment 2 2 1



Application received

Nestled in the quiet tree-lined street, yet only a few minutes' walking distance to Woolworth, Wollli Creek station, Cafes and restaurants, this ultra-bright & spacious apartment is proudly sitting on level 4 of the brand new security building, overlooking the open lefty street view.

- As Brand new 2 large bedrooms, all with built-ins, main with ensuite
- Spacious dining and living room with timber floor board throughout leading to huge wrap around balcony overlooking beautiful open view
- Gourmet kitchen with stone benchtop, quality stainless steel appliances. Gas cooking
- Elegant bathroom with floor to ceiling tiles
- Internal laundry with dryer
- NBN broadband ready. Security intercom
- Air conditioning
- Security parking
- Minutes' walk to all amenities

Open for Inspection

By Appointment.

Listed By



Angela Liang

Mobile: 0412 570 465

